

asolorep
ADVENTURES

JUNE 9-16, 2022
CRYSTAL CRUISES
SYMPHONY

Venice to Monte Carlo





Dear Friends,

After enduring many changes and challenges in the year of 2020, we have been looking forward to the day when we can be together safely, traveling and enjoying new, sensational experiences. And here is one you won't want to miss! We are delighted to invite you, along with other long-time friends and supporters of Asolo Rep, to spend seven luxurious days and nights aboard Crystal Cruises' Symphony.

We'll travel from the historic city of Venice, taking in the Old World flavors and stunning scenery in Croatia and Montenegro, through the Mediterranean Sea, and on to relive the Renaissance in Florence and to see some of Italy's most beautiful cities. We will end our trip in the glamorous city of Monte Carlo along the Côte d'Azur.

Onboard the Symphony, we'll set aside time to hold discussions on what it takes to make world-class theatre, and give you a thrilling peek behind the scenes of Asolo Rep's 2022/23 season. We will also have private dinners with our group, as well as special welcome and farewell receptions.

The global pandemic has taken a toll on all of us, so we hope that this cruise inspires you to look ahead to new beginnings and happier times where we can be together again. This is a once-in-a-lifetime opportunity to visit extraordinary places, expand our minds, and build and deepen lifelong bonds with our fellow Asolo Rep friends. This cruise will sell out quickly, so please read on and do plan to join us for a fun and relaxing journey in June of 2022.

Michael D. Edwards
MICHAEL DONALD EDWARDS
PRODUCING ARTISTIC DIRECTOR



ITINERARY SUMMARY

DAY / DATE	PORT	ARRIVE	DEPART
JUNE 9 THU	VENICE (VENEZIA), ITALY	–	6:00PM
JUNE 10 FRI	SPLIT, CROATIA	8:00AM	9:00PM
JUNE 11 SAT	KOTOR, MONTENEGRO	8:00AM	6:00PM
JUNE 12 SUN	CRUISING THE IONIAN SEA / SEMINAR-AT-SEA	–	–
JUNE 13 MON	SORRENTO, ITALY	7:00AM	9:00PM
JUNE 14 TUE	ROME/CIVITAVECCHIA, ITALY	8:00AM	9:00PM
JUNE 15 WED	FLORENCE/LIVORNO, ITALY	7:00AM	7:00PM
JUNE 16 THU	MONTE CARLO, MONACO	7:00AM	–



DAY 1: THURSDAY, JUNE 9, 2022

Venice, Italy

One of the world's most enchanting cities, Venice is comprised of more than 100 separate islands and a labyrinth of canals laced together by a string of 400 intricate bridges. A whimsical stroll through the city leads to a hidden world of ornately decorated piazzas and a legacy of Baroque architecture. Admire the richness of St. Mark's Basilica and the lavishness of the Palazzo Ducale.



DAY 2: FRIDAY, JUNE 10, 2022

Split, Croatia

Travel beyond the walls of one of the most majestic cities on the Croatian Adriatic Coast. Split has a prestigious reputation for impressive architecture, famous museums and cultural constructs that should not be missed.



DAY 3: SATURDAY, JUNE 11, 2022

Kotor, Montenegro

Few places in the world boast such clear architectural accounts of their full histories as does UNESCO-listed Kotor and its bay. Roam the city squares and enjoy sweeping ocean views as you follow footsteps through time, including fortifications dating from the 9th century, significant churches and cathedrals from the 12th-15th centuries, the 17th-century Prince's Palace and the 19th-century Napoleon's Theatre.



DAY 4: SUNDAY, JUNE 12, 2022

Cruising the Ionian Sea

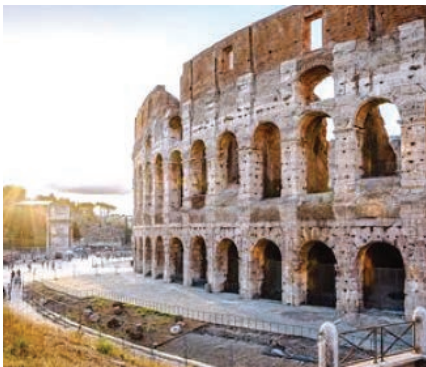
From reading comfortably in the library to sipping fine vintages at a wine tasting, a wonderful spectrum of enriching activities awaits you on board. Attend an engaging guest lecture or enjoy the upper deck as you improve your golf game on the putting green. Spend the afternoon with friends at a lively trivia contest or bridge tournament. Or simply lose yourself in deep relaxation with one of Canyon Ranch SpaClub's signature treatments.



DAY 5: MONDAY, JUNE 13, 2022

Sorrento, Italy

Dramatic bluffs and craggy cliffs draped with flowing pink blossoms are the welcoming introduction to this romantic port renowned for its serene way of life.



DAY 6: TUESDAY, JUNE 14, 2022

Rome/Civitavecchia, Italy

Venture through Civitavecchia, noted for its fine seafood and beautiful monuments. Then, travel to the Eternal City of Rome, with more than 2,500 years of history and ancient landmarks that will leave you with memories for a lifetime.



DAY 7: WEDNESDAY, JUNE 15, 2022

Florence/Livorno, Italy

Giotto, Brunelleschi, Botticelli and Michelangelo made their marks of genius here. This cradle of the Renaissance owes its UNESCO status to the overwhelming influence the city and its museums, churches, architecture and artworks have had on Europe and, ultimately, the world. Vestiges of this enlightened period are everywhere today – at the Uffizi gallery, the Palazzi Pitta and Vecchio and throughout the city streets.



DAY 8: THURSDAY, JUNE 16, 2022

Monte Carlo, Monaco

An ancient principality steeped in rich and colorful history, Monaco was bought from the Genoese in 1309 by the Grimaldis, who still rule as the world's oldest monarchy – presided over today by Prince Albert.

Note: Asolo Rep will host 1-2 Seminars-at-Sea, details to be announced.



TOTAL LUXURY CRYSTAL CRUISES SYMPHONY

ALL-INCLUSIVE PACKAGE INCLUDES:

- 7 luxurious days and nights aboard the six-star luxury liner, *Crystal Symphony*
- Unlimited select wines, spirits, champagne and non-alcoholic beverages
- All gourmet meals and amenities on board
- Acclaimed dining in up to eleven venues, including Nobu Matsuhisa's only sea-going restaurants
- Welcome and farewell cocktail receptions
- Seminars-at-Sea with Asolo Rep's Producing Artistic Director and Managing Director
- Free, unlimited WI-FI
- All port charges and government taxes
- All gratuities for housekeeping, bar, and dining staff
- Tax deductible donation to Asolo Rep



CRYSTAL CLEAN+

The latest, updated measures in Crystal Clean+ – version 4.0. Every protocol will be continually evaluated and updated as new information becomes available.

Full list of protocols can be found at crystalcruises.com/crystal-clean

- **Pre-boarding Declaration of Safety** online health questionnaire, verified proof of the required COVID vaccine, and a negative COVID test before boarding
- **Embarkation & Disembarkation** health questionnaire and COVID test at the terminal, temperature check, and luggage disinfected
- **Capacity Control & Social Distancing** reduced capacity and social distancing in all public spaces on board
- **Social Spaces & Accommodations** frequent disinfection with products that meet the criteria for use against COVID-19, and electrostatic fogging with medical-grade anti-viral and anti-microbial oxidants
- **Fresh-Air Ventilation Systems** 100% fresh, non-recirculated air in all guest suites, staterooms and social spaces
- **Masks & Face Coverings** masks required in venues and instances where proper distancing is not possible
- **Crewmember Standards & Practices** officers and crew are temperature-tested, tested for COVID-19 and monitored for symptoms regularly
- **Contactless Dining** limited person-to-person contact during dining and elimination of self-service options

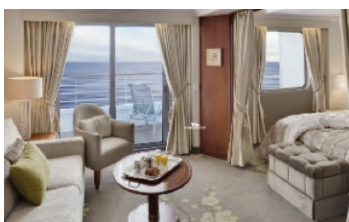
STATEROOMS



CRYSTAL PENTHOUSE – CP

1,019 Sq. ft. Private verandah with teak furniture; Spacious living room with TV, custom wool carpets, walnut floors, cabinetry and Swarovski chandelier; Dining area with panoramic ocean views; Separate study; Custom built-in bar; Large bedroom with queen-size bed (or twin beds) with Frette linens, walk-in wardrobes and TV; Master bath with Jacuzzi, ocean view, crystal sconces and Calacatta marble floors, separate shower and bidet; Guest bathroom; Complimentary welcome bottle of champagne upon arrival; Complimentary daily newspaper; Binoculars; “Do Not

Disturb” electronic doorbell; A total of two private car and driver transfers per voyage from/to the designated airport in the port city for embarkation and disembarkation or transfers to/from other locations within 100 miles of the port city for embarkation/disembarkation; Attentive butler service; Free in-suite phone usage (Two hours per cruise/per room); Free pressing, laundry and dry cleaning; Unlimited complimentary specialty restaurant dining (by reservation, based on space availability). (BASED ON AVAILABILITY/PRICING SUBJECT TO CHANGE)



PENTHOUSE SUITE – PS

527 Sq. ft. Private verandah; Spacious living/dining area; Two TVs; Queen-size bed (or twin beds) with sumptuous bedding, and third berth; Full Jacuzzi bathtub with separate shower and bidet; Complimentary welcome bottle of champagne upon arrival; Walk-in wardrobe; Binoculars; “Do Not Disturb” electronic doorbell; Attentive butler service; Free in-suite phone usage (One hour per cruise/per room); Free pressing service; Unlimited complimentary specialty restaurant dining (by reservation, based on space availability). (BASED ON AVAILABILITY/PRICING SUBJECT TO CHANGE)



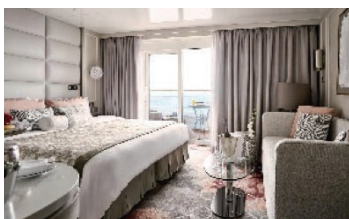
SEABREEZE PENTHOUSE SUITE – SP

510 Sq. ft. Private verandah; Spacious living area; Queen-size bed (or twin beds) with sumptuous bedding and third berth; Large luxury shower with body jets; Walk-in wardrobe; Two TVs; Complimentary welcome bottle of champagne upon arrival; Binoculars; Washer/dryer combo; “Do Not Disturb” electronic doorbell; Attentive butler service; Free in-suite phone usage (One hour per cruise/per room); Free pressing service; Unlimited complimentary specialty restaurant dining (by reservation, based on space availability). (BASED ON AVAILABILITY/PRICING SUBJECT TO CHANGE)



PENTHOUSE – PH

388 Sq. ft. Private verandah; Spacious living area; TV; Queen-size bed (or twin beds) with sumptuous bedding, and third berth; Full Jacuzzi bathtub with separate shower; Complimentary welcome bottle of champagne upon arrival; Walk-in wardrobe; Binoculars; “Do Not Disturb” electronic doorbell; Attentive butler service; Free pressing service; Unlimited complimentary specialty restaurant dining (by reservation, based on space availability).



SEABREEZE PENTHOUSE – SH

368 Sq. ft. Private verandah; Spacious living area; Shared entryway to connect two Seabreeze Penthouses; Queen-size bed (or twin beds) with sumptuous bedding and third berth; Large luxury shower with body jets; Walk-in wardrobe; TV; Complimentary welcome bottle of champagne upon arrival; Binoculars; “Do Not Disturb” electronic doorbell; Attentive butler service; Free pressing service; Unlimited complimentary specialty restaurant dining (by reservation, based on space availability).



DELUXE STATEROOM WITH VERANDAH A1 | A2 | A3 | B1 | B2

254 Sq. ft. Private verandah; Seating area; Queen-size bed (or twin beds) with sumptuous bedding; TV; Full bathtub/shower combination; Spacious wall wardrobe; Complimentary select beer, wine and spirits upon request; “Do Not Disturb” electronic doorbell.



DELUXE STATEROOM C1 | C2 | D | E1 | E2

207 Sq. ft. Large picture window; Seating area; Queen-size bed (or twin beds) with sumptuous bedding; TV; Full bathtub/shower combination; Spacious wall wardrobe; Complimentary select beer, wine and spirits upon request; “Do Not Disturb” electronic doorbell.

PRICING

STATEROOM CATEGORIES	SINGLE OCCUPANCY PER CABIN	DOUBLE OCCUPANCY PER CABIN
CP CRYSTAL PENTHOUSE* (VERANDAH/BUTLER SERVICE, 1,019 SQ. FT.)	NOT AVAILABLE	CALL FOR PRICING
PS PENTHOUSE SUITE* (VERANDAH/BUTLER SERVICE, 527 SQ. FT.)	\$17,613	\$18,928
SP SEABREEZE PENTHOUSE SUITE* (VERANDAH/BUTLER SERVICE, 510 SQ. FT.)	\$17,113	\$18,428
PH PENTHOUSE (VERANDAH/BUTLER SERVICE, 388 SQ. FT.)	\$11,813	\$14,628
SH SEABREEZE PENTHOUSE (VERANDAH/BUTLER SERVICE, 368 SQ. FT.)	\$11,376	\$14,128
A1 DELUXE VERANDAH STATEROOM (254 SQ. FT.)	\$7,054	\$10,828
A2 DELUXE VERANDAH STATEROOM* (254 SQ. FT.)	\$6,914	\$10,628
A3 DELUXE VERANDAH STATEROOM (254 SQ. FT.)	\$6,634	\$10,228
B1 DELUXE VERANDAH STATEROOM (254 SQ. FT.)	\$6,354	\$9,828
B2 DELUXE VERANDAH STATEROOM (254 SQ. FT.)	\$6,214	\$9,628
C1 DELUXE STATEROOM (207 SQ. FT.)	\$5,474	\$9,028
C2 DELUXE STATEROOM* (207 SQ. FT.)	\$5,344	\$8,828
D DELUXE STATEROOM* (207 SQ. FT.)	\$5,214	\$8,628
E1 DELUXE STATEROOM (207 SQ. FT.)	\$4,759	\$7,928
E2 DELUXE STATEROOM* (207 SQ. FT. – FULLY OBSTRUCTED VIEW)	\$4,564	\$7,628

*Based on availability; pricing subject to change

PRICES ALSO INCLUDE:

- \$1,000 per person, non-refundable, tax deductible donation to Asolo Rep Theatre
- \$315 per person port charges and government taxes (subject to change at any time)
- Single Supplement, if applicable (*supplement varies depending on type of cabin; subject to change at any time. Please inquire for current single supplement*).

PRICES EXCLUDE:

- Airfare
- Airport transfers (*except for category CP*)
- Pre/Post cruise hotel accommodations
- Excursions and land activities/meals

PAYMENTS & RESERVATIONS

A required deposit of 25% per cabin plus a non-refundable, tax-deductible deposit of \$1,000 per person is due at the time of booking.

Visa, MasterCard, American Express, Discover Card or check (payable to **Asolo Repertory Theatre**) will be accepted.

Cabins will be sold on a first-come, first-served basis.

PAYMENT SCHEDULE

Time of booking	\$1,000 per person + 25% of cabin price
Optional: September 12, 2021	Remaining Balance – Early Payment Discount of 2.5% off the total cruise fare
November 18, 2021	50% of the remaining balance
January 20, 2022 (140 days)	Remaining Balance

FINAL PAYMENT IS DUE JANUARY 20, 2022

Cancellation policy: All cancellations will be assessed a tax deductible donation to Asolo Rep Theatre of \$1,000 per person and a non-transferable \$200 administrative fee per person. Cancellation requests must be made in writing to Asolo Rep's Special Events Manager. If the request is received at least 121 days prior to cruise departure date (February 8, 2022), a refund of deposit, less the Asolo Rep donation and administrative fee, will be made. The administrative fee will be issued as a 12-month future cruise credit. Later cancellations will be assessed the following charges:

DAYS PRIOR TO CRUISE DEPARTURE	CANCELLATION FEE
120 to 91	25% of fare
90 to 61	50% of fare
60 to 31	75% of fare
30 to 0	100% of fare

CONTACT Laura Stuart Wood, Manager of Special Events
941-351-9010 ext. 4712 or Laura_Wood@asolo.org
asolorep.org/trips

Join Us!

asolorep
ADVENTURES

