

Venice to Monte Carlo

asolorep
ADVENTURES

JUNE 20-30, 2021
CRYSTAL CRUISES
SYMPHONY





Dear Friends,

Once again, we are delighted to invite you, along with other long-time friends and supporters of Asolo Rep, to spend 10 luxurious days and nights aboard Crystal Cruises' Symphony.

We'll travel from the historic city of Venice, taking in the Old World flavors and stunning scenery in Croatia and Montenegro, through the Mediterranean Sea, and on to relive the Renaissance in Florence and to see some of Italy's most beautiful cities. We will end our trip in the glamorous city of Monte Carlo along the Côte d'Azur.

Onboard the Symphony, we'll set aside time to hold discussions on what it takes to make world-class theatre, and give you a thrilling peek behind the scenes of Asolo Rep's 2021/22 season. We will also have private dinners with our group, as well as special welcome and farewell receptions.

This is a once-in-a-lifetime opportunity to visit extraordinary places, expand our minds, and build and deepen lifelong bonds with our fellow Asolo Rep friends. This cruise will sell out quickly, so please read on and do plan to join us for a fun and relaxing journey in June of 2021.

Michael D. Edwards

MICHAEL DONALD EDWARDS
PRODUCING ARTISTIC DIRECTOR



ITINERARY SUMMARY

DAY / DATE	PORT	ARRIVE	DEPART
JUNE 20 SUN	VENICE (VENEZIA), ITALY	-	6:00PM
JUNE 21 MON	SPLIT, CROATIA	8:00AM	6:00PM
JUNE 22 TUE	KOTOR, MONTENEGRO	8:00AM	6:00PM
JUNE 23 WED	CORFU (KÉRKIRA), GREECE	8:00AM	5:00PM
JUNE 24 THU	SEMINAR-AT-SEA VALLETTA, MALTA	12:00PM	7:00PM
JUNE 25 FRI	SICILY/CATANIA, ITALY	8:00AM	6:00PM
JUNE 26 SAT	SORRENTO, ITALY	7:30AM	6:00PM
JUNE 27 SUN	ROME/CIVITAVECCHIA, ITALY	7:00AM	8:00PM
JUNE 28 MON	PORTOFINO, ITALY	8:00AM	7:00PM
JUNE 29 TUE	FLORENCE/LIVORNO, ITALY	7:00AM	7:00PM
JUNE 30 WED	MONTE CARLO, MONACO	7:00AM	-



DAY 1: SUNDAY, JUNE 20, 2021

Venice, Italy

One of the world's most enchanting cities, Venice is comprised of more than 100 separate islands and a labyrinth of canals laced together by a string of 400 intricate bridges. A whimsical stroll through the city leads to a hidden world of ornately decorated piazzas and a legacy of Baroque architecture. Admire the richness of St. Mark's Basilica and the lavishness of the Palazzo Ducale.



DAY 2: MONDAY, JUNE 21, 2021

Split, Croatia

Travel beyond the walls of one of the most majestic cities on the Croatian Adriatic Coast. Split has a prestigious reputation for impressive architecture, famous museums and cultural constructs that should not be missed.



DAY 3: TUESDAY, JUNE 22, 2021

Kotor, Montenegro

Few places in the world boast such clear architectural accounts of their full histories as does UNESCO-listed Kotor and its bay. Roam the city squares and enjoy sweeping ocean views as you follow footsteps through time, including fortifications dating from the 9th century, significant churches and cathedrals from the 12th-15th centuries, the 17th-century Prince's Palace and the 19th-century Napoleon's Theatre.



DAY 4: WEDNESDAY, JUNE 23, 2021

Corfu (Kérkira), Greece

Immerse yourself in this immaculately preserved island covered in cypress and olive trees. Corfu is considered one of the Mediterranean's best kept secrets and its elegant downtown area, serene beaches and warm breezes will leave you truly captivated.



DAY 5: THURSDAY, JUNE 24, 2021

Valletta, Malta

A treasure trove of cultures, Valletta is a monument to the past, founded in 1566 by the Grand Master of the Knights of St. John. Be sure to see the Magisterial Palace and St. John's Cathedral, lavishly decorated with the coats of arms and banners of the crusading knights. Beyond Valletta, the countryside, although austere and rocky, has a special charm.



DAY 6: FRIDAY, JUNE 25, 2021

Sicily/Catania, Italy

Nestled snugly at the foot of Mount Etna, this ancient port is a rich tapestry of landscapes and traditions. Indeed, here on the largest island in the Mediterranean – a cultural crossroads for centuries – you'll find influences from Greek and Phoenician to French and Spanish, all reflected in rich cuisine and Baroque architecture. Be sure to explore its historic UNESCO-listed center, filled with towering palazzi and sweeping plazas.



DAY 7: SATURDAY, JUNE 26, 2021

Sorrento, Italy

Dramatic bluffs and craggy cliffs draped with flowing pink blossoms are the welcoming introduction to this romantic port renowned for its serene way of life.



DAY 8: SUNDAY, JUNE 27, 2021

Rome/Civitavecchia, Italy

Venture through Civitavecchia, noted for its fine seafood and beautiful monuments. Then, travel to the Eternal City of Rome, with more than 2,500 years of history and ancient landmarks that will leave you with memories for a lifetime.



DAY 9: MONDAY, JUNE 28, 2021

Portofino, Italy

Located on the Italian Riviera, Portofino's brilliant bay is ringed by lush green hills serenely profiled against the sky.

Note: Asolo Rep will host 1-2 Seminars-at-Sea, details to be announced.



DAY 10: TUESDAY, JUNE 29, 2021

Florence/Livorno, Italy

Giotto, Brunelleschi, Botticelli and Michelangelo made their marks of genius here. This cradle of the Renaissance owes its UNESCO status to the overwhelming influence the city and its museums, churches, architecture and artworks have had on Europe and, ultimately, the world. Vestiges of this enlightened period are everywhere today – at the Uffizi gallery, the Palazzi Pitta and Vecchio and throughout the city streets.



DAY 11: WEDNESDAY, JUNE 30, 2021

Monte Carlo, Monaco

An ancient principality steeped in rich and colorful history, Monaco was bought from the Genoese in 1309 by the Grimaldis, who still rule as the world's oldest monarchy – presided over today by Prince Albert.

ALL-INCLUSIVE PACKAGE INCLUDES:

- 10 luxurious days and nights aboard the six-star luxury liner, *Crystal Symphony*
- Unlimited select wines, spirits, champagne and non-alcoholic beverages
- All gourmet meals and amenities on board
- Acclaimed dining in up to eleven venues, including Nobu Matsuhisa's only sea-going restaurants
- Welcome and farewell cocktail receptions
- Seminars-at-Sea with Asolo Rep's Producing Artistic Director and Managing Director
- Free, unlimited WI-FI
- All port charges and government taxes
- All gratuities for housekeeping, bar, and dining staff
- Tax deductible donation to Asolo Rep



TOTAL LUXURY
CRYSTAL CRUISES
SYMPHONY

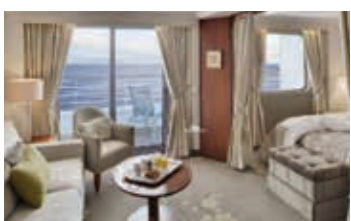
STATEROOMS



CRYSTAL PENTHOUSE - CP

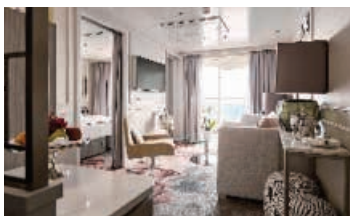
1,019 Sq. ft. Private verandah with teak furniture; Spacious living room with TV, custom wool carpets, walnut floors, cabinetry and Swarovski chandelier; Dining area with panoramic ocean views; Separate study; Custom built-in bar; Large bedroom with queen-size bed (or twin beds) with Frette linens, walk-in wardrobes and TV; Master bath with Jacuzzi, ocean view, crystal sconces and Calacatta marble floors, separate shower and bidet; Guest bathroom; Complimentary welcome bottle of champagne upon arrival; Complimentary daily newspaper; Binoculars; "Do Not

Disturb" electronic doorbell; A total of two private car and driver transfers per voyage from/to the designated airport in the port city for embarkation and disembarkation or transfers to/from other locations within 100 miles of the port city for embarkation/disembarkation; Attentive butler service; Free in-suite phone usage (Two hours per cruise/per room); Free pressing, laundry and dry cleaning; Unlimited complimentary specialty restaurant dining (by reservation, based on space availability). (BASED ON AVAILABILITY/PRICING SUBJECT TO CHANGE)



PENTHOUSE SUITE - PS

527 Sq. ft. Private verandah; Spacious living/dining area; Two TVs; Queen-size bed (or twin beds) with sumptuous bedding, and third berth; Full Jacuzzi bathtub with separate shower and bidet; Complimentary welcome bottle of champagne upon arrival; Walk-in wardrobe; Binoculars; "Do Not Disturb" electronic doorbell; Attentive butler service; Free in-suite phone usage (One hour per cruise/per room); Free pressing service; Unlimited complimentary specialty restaurant dining (by reservation, based on space availability). (BASED ON AVAILABILITY/PRICING SUBJECT TO CHANGE)



SEABREEZE PENTHOUSE SUITE - SP

510 Sq. ft. Private verandah; Spacious living area; Queen-size bed (or twin beds) with sumptuous bedding and third berth; Large luxury showers with body jets; Walk-in wardrobe; Two TVs; Complimentary welcome bottle of champagne upon arrival; Binoculars; Washer/dryer combo; "Do Not Disturb" electronic doorbell; Attentive butler service; Free in-suite phone usage (One hour per cruise/per room); Free pressing service; Unlimited complimentary specialty restaurant dining (by reservation, based on space availability). (BASED ON AVAILABILITY/PRICING SUBJECT TO CHANGE)



PENTHOUSE - PH

388 Sq. ft. Private verandah; Spacious living area; TV; Queen-size bed (or twin beds) with sumptuous bedding, and third berth; Full Jacuzzi bathtub with separate shower; Complimentary welcome bottle of champagne upon arrival; Walk-in wardrobe; Binoculars; "Do Not Disturb" electronic doorbell; Attentive butler service; Free pressing service; Unlimited complimentary specialty restaurant dining (by reservation, based on space availability).



SEABREEZE PENTHOUSE - SH

368 Sq. ft. Private verandah; Spacious living area; Shared entryway to connect two Seabreeze Penthouses; Queen-size bed (or twin beds) with sumptuous bedding and third berth; Large luxury shower with body jets; Walk-in wardrobe; TV; Complimentary welcome bottle of champagne upon arrival; Binoculars; "Do Not Disturb" electronic doorbell; Attentive butler service; Free pressing service; Unlimited complimentary specialty restaurant dining (by reservation, based on space availability).



DELUXE STATEROOM WITH VERANDAH A1 | A2 | A3 | B1 | B2

254 Sq. ft. Private verandah; Seating area; Queen-size bed (or twin beds) with sumptuous bedding; TV; Full bathtub/shower combination; Spacious wall wardrobe; Complimentary select beer, wine and spirits upon request; "Do Not Disturb" electronic doorbell.



DELUXE STATEROOM C1 | C2 | D | E1 | E2

207 Sq. ft. Large picture window; Seating area; Queen-size bed (or twin beds) with sumptuous bedding; TV; Full bathtub/shower combination; Spacious wall wardrobe; Complimentary select beer, wine and spirits upon request; "Do Not Disturb" electronic doorbell.

PRICING

STATEROOM CATERGORIES	SINGLE OCCUPANCY PER CABIN	DOUBLE OCCUPANCY PER CABIN
CP CRYSTAL PENTHOUSE* (VERANDAH/BUTLER SERVICE, 1,019 SQ. FT.)	\$53,148	\$54,598
PS PENTHOUSE SUITE* (VERANDAH/BUTLER SERVICE, 527 SQ. FT.)	\$27,348	\$28,798
SP SEABREEZE PENTHOUSE SUITE* (VERANDAH/BUTLER SERVICE, 510 SQ. FT.)	\$27,348	\$28,798
PH PENTHOUSE (VERANDAH/BUTLER SERVICE, 388 SQ. FT.)	\$18,248	\$22,098
SH SEABREEZE PENTHOUSE (VERANDAH/BUTLER SERVICE, 368 SQ. FT.)	\$18,248	\$22,098
A1 DELUXE VERANDAH STATEROOM (254 SQ. FT.)	\$10,549	\$15,898
A2 DELUXE VERANDAH STATEROOM* (254 SQ. FT.)	\$10,479	\$15,798
A3 DELUXE VERANDAH STATEROOM (254 SQ. FT.)	\$10,269	\$15,498
B1 DELUXE VERANDAH STATEROOM (254 SQ. FT.)	\$10,059	\$15,198
B2 DELUXE VERANDAH STATEROOM (254 SQ. FT.)	\$9,919	\$14,998
C1 DELUXE STATEROOM (207 SQ. FT.)	\$8,989	\$14,498
C2 DELUXE STATEROOM* (207 SQ. FT.)	\$8,794	\$14,198
D DELUXE STATEROOM* (207 SQ. FT.)	\$7,819	\$12,698
E1 DELUXE STATEROOM (207 SQ. FT.)	\$7,364	\$11,998
E2 DELUXE STATEROOM* (207 SQ. FT.)	\$6,909	\$11,298

*Based on availability; pricing subject to change

PRICES ALSO INCLUDE:

- \$1,000 per person, non-refundable, tax deductible donation to Asolo Rep Theatre
- \$450 per person port charges and government taxes (subject to change at any time)
- Single Supplement, if applicable (*supplement varies depending on type of cabin; subject to change at any time. Please inquire for current single supplement*).

PRICES EXCLUDE:

- Airfare
- Airport transfers (*except for category CP*)
- Pre/Post cruise hotel accommodations
- Excursions and land activities/meals

PAYMENTS & RESERVATIONS

A required deposit of 25% per cabin plus a non-refundable, tax-deductible deposit of \$1,000 per person is due at the time of booking.

Visa, MasterCard, American Express, Discover Card or check (payable to **Asolo Repertory Theatre**) will be accepted.

Cabins will be sold on a first-come, first-served basis.

PAYMENT SCHEDULE

Time of booking	\$1,000 per person + 25% of cabin price
Optional: September 23, 2020	Remaining Balance -- Early Payment Discount of 2.5% off the total cruise fare
November 27, 2020	50% of the remaining balance
January 29, 2021 (140 days)	Remaining Balance

FINAL PAYMENT IS DUE JANUARY 29, 2021

Cancellation policy: All cancellations will be assessed a tax deductible donation to Asolo Rep Theatre of \$1,000 per person and a non-transferable \$100 administrative fee per person. Cancellation requests must be made in writing to Asolo Rep's Special Events Manager. If the request is received at least 121 days prior to cruise departure date (February 19, 2021), a refund of deposit, less the Asolo Rep donation and administrative fee, will be made. The administrative fee will be issued as a 12-month future cruise credit. Later cancellations will be assessed the following charges:

DAYS PRIOR TO CRUISE DEPARTURE	CANCELLATION FEE
120 to 91	25% of fare
90 to 61	50% of fare
60 to 31	75% of fare
30 to 0	100% of fare

CONTACT Laura Stuart Wood, Manager of Special Events
941-351-9010 ext. 4712 or Laura_Wood@asolo.org
asolorep.org/trips

Join Us!

asolorep
ADVENTURES

